

PUTCO®

ADVANCED LED LIGHTING & TRUCK ACCESSORIES

STINGER

Universal Grille Bracket

Installation Instructions



For proper installation and best possible fit, please read all instructions and verify all parts are included BEFORE you begin.

Customer Service

For support, please contact the Putco team, available Monday to Friday 8:30 AM to 5PM (Central Time).

1 800 247 3974 or support@putco.com

Note

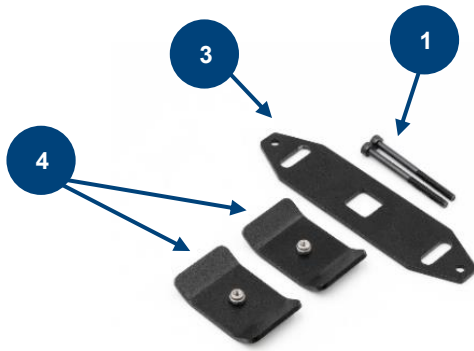
The Putco Universal Stinger Grille Brackets are designed to work with a wide variety of grilles and vehicles; installation steps will vary from vehicle to vehicle. Due to variations in hole spacing, the Stinger and Stinger PRO will require different kits; ensure you have ordered the correct kit to support your light heads (**sold separately**). For specific details on how to wire your Stinger or Stinger Pro, refer to the instructions included with your light head.

Required Tools

2.5mm Hex Key

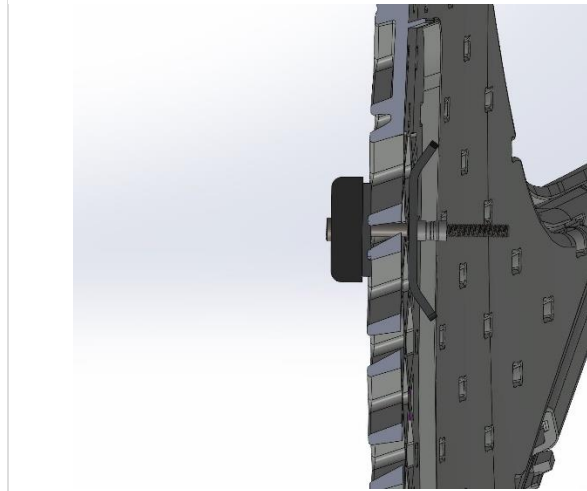
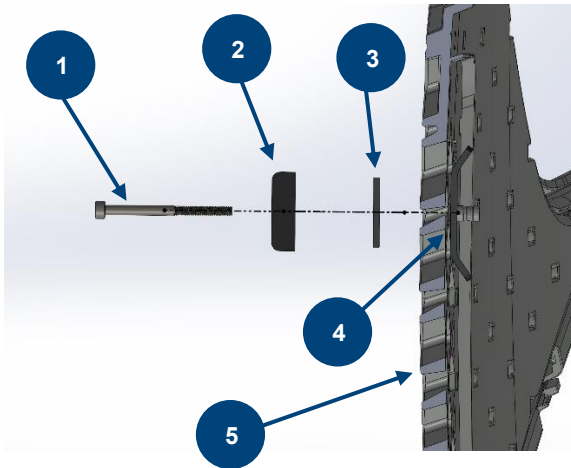
Kit Contents

#	Item	Qty.
1	Alloy Steel Socket Head Screw, M3 x 0.5mm thread, 40mm long	2
2	Stinger or Stinger Pro light head	NOT INCLUDED SOLD SEPARATELY
3	Stinger or Stinger Pro Backplate	1
4	Anchor Plate	2



NOT INCLUDED,
SOLD SEPARATELY

Installation



Use a 2.5mm hex key to thread the M3 bolts **(1)** through the light head **(2)** and backplate **(3)** and into the anchor plates **(4)** on the other side of the grille **(5)** and secure the assembly to the vehicle. **Do not overtighten!**

Congratulations on completing the installation of your Putco product!
For information regarding your warranty, please visit www.putco.com/warranty.



WARNING: Final Inspection required. Inspect product was properly Installed and all installation instructions were followed.



For additional information, please visit our website at www.putco.com!